

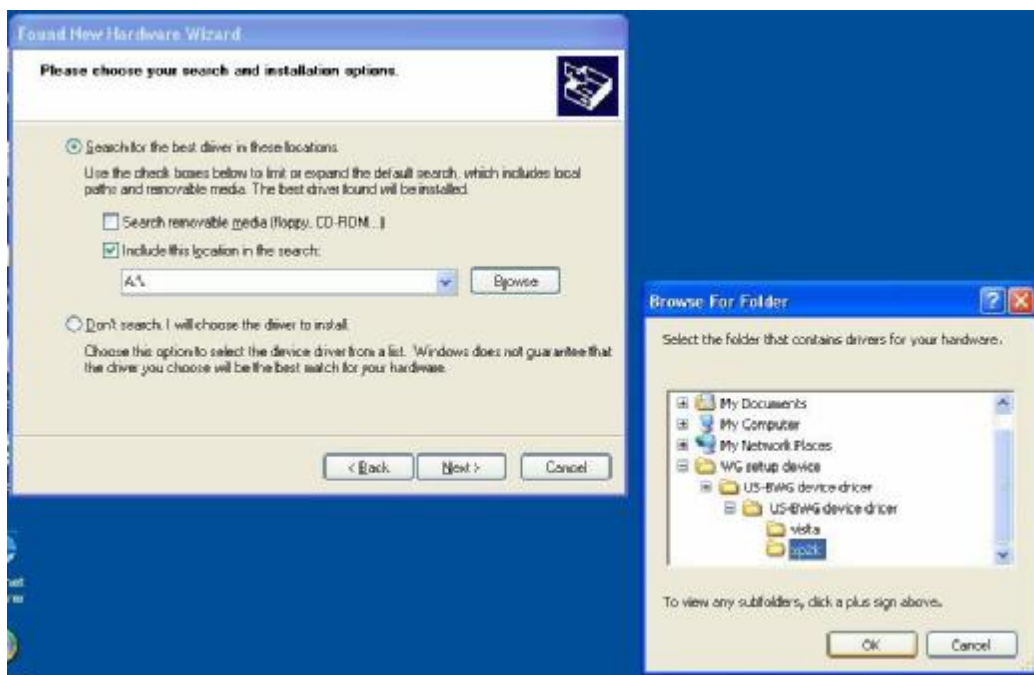
1 Connect the WG setup device to PC



2 Install the software

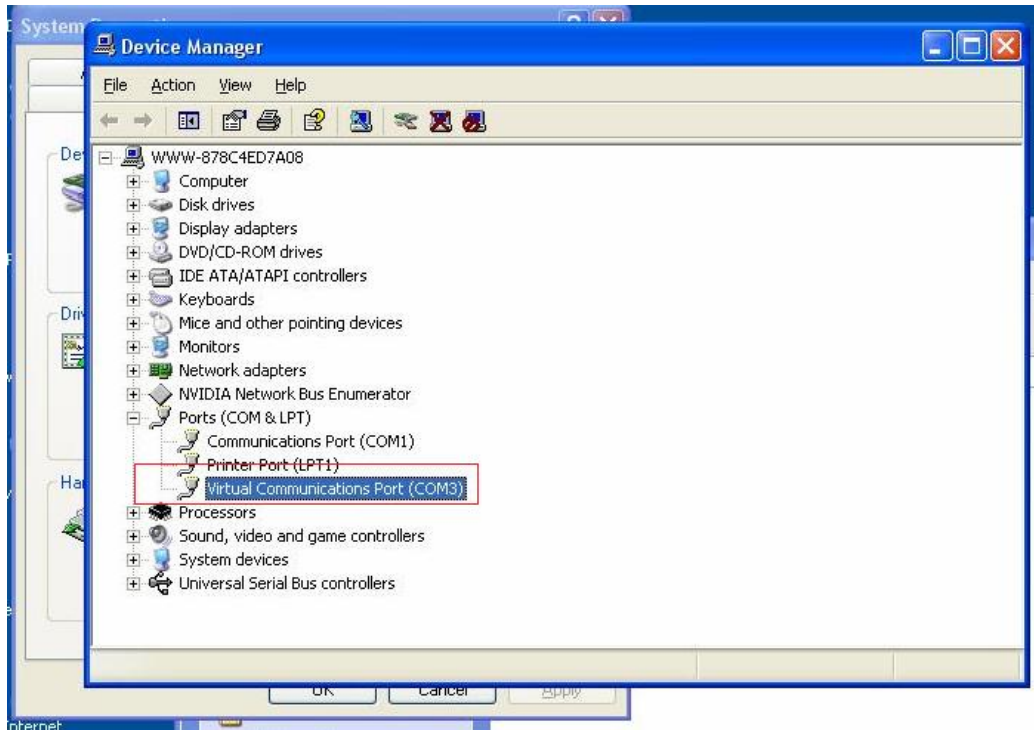


3 Choose the right folder



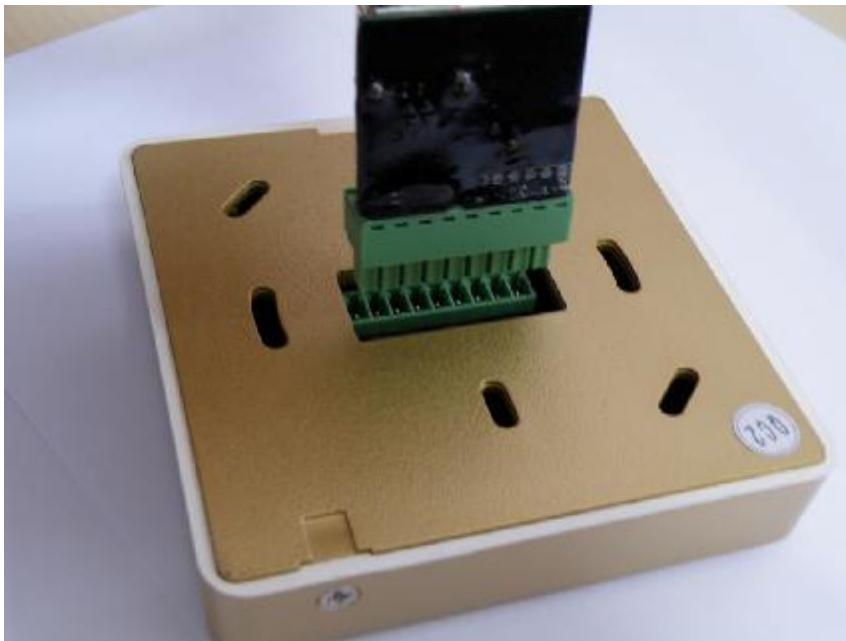
4 Finish

If you install the driver right, you would find in the 'Device Manager' there is 'Virtual Communications Port (COM3)'



5 Connect setup device and reader

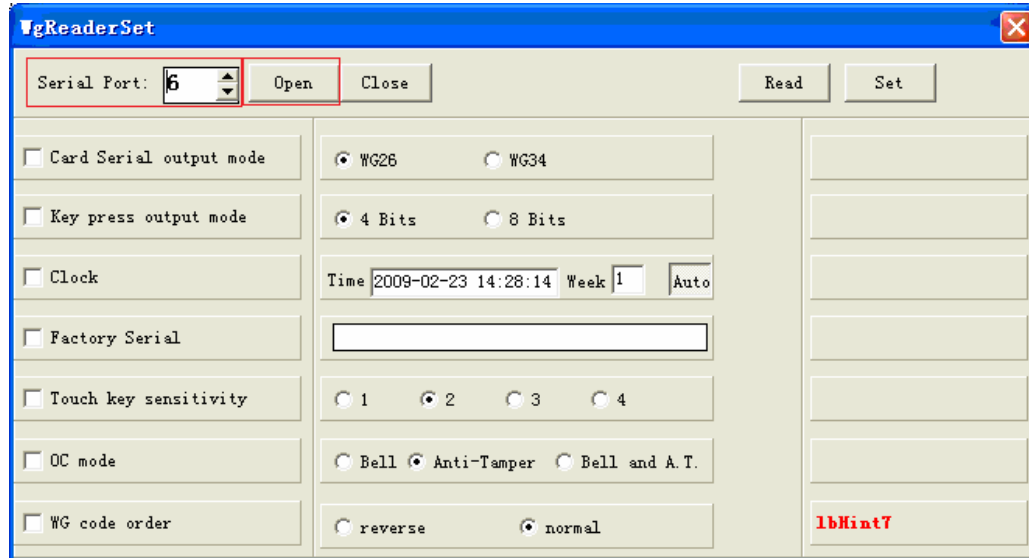
The reader will not start, if the reader LED bright please re-inserts the USB port.



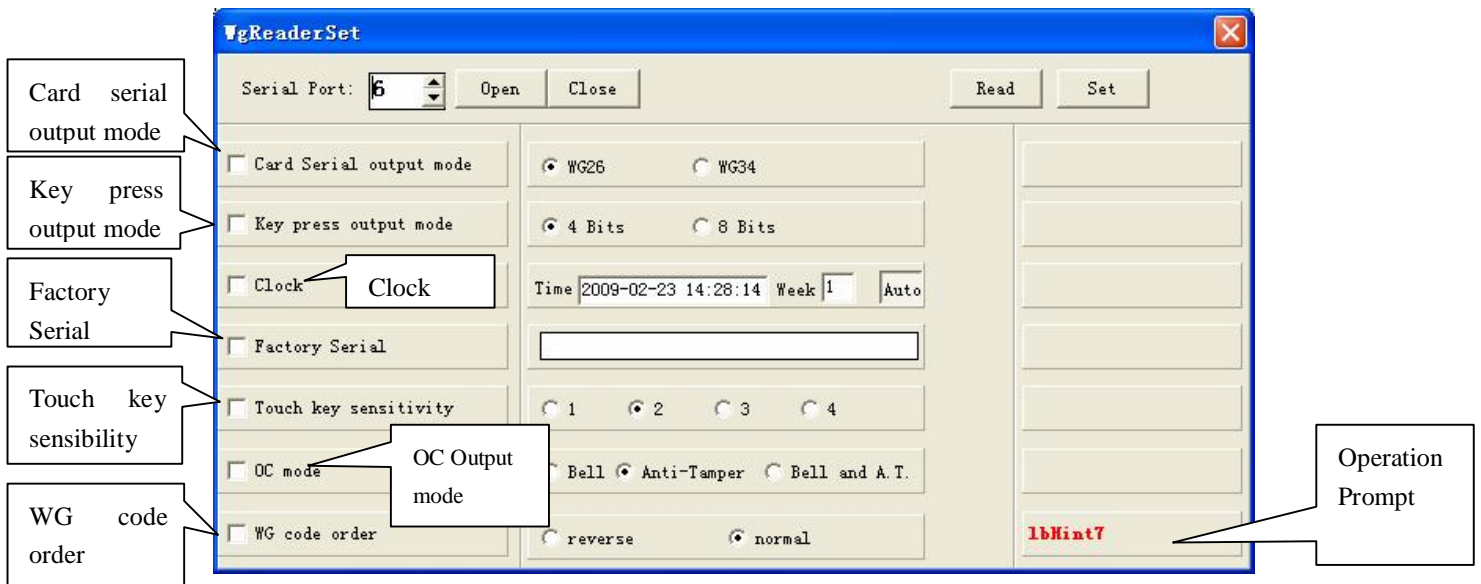
6 Open the WG setup software

Choose the Serial Port number according last step, then click 'Open'.

This set up device is virtual port. If open failure, please re-insert USB port and restarted software.



7 Operate specification



Notice: 1. (√) in the frame means available. (⊙) means available.

Card Serial output mode: WG26 and WG 34 are available for choice.

Key press output mode: 4 bit and 8 bit are available for choice.

Clock: Click Auto, the software will choose the current system time automatically. You can set the clock when the Auto comes out. (There is no need to set when the card reader doesn't have the display.)

Touch Key sensibility: The bigger the number is, the better the sensibility is. 4 is the highest, 1 is the lowest. (There is no need to set when the card reader doesn't have the touch sensor keypad).

OC mode:

Bell: Set to be the bell output, that means the OC is outputting signal.

Anti-tamper: Set to be anti-tamper output. (There is no need to set when the card reader doesn't have bell)

WG code order: The original card No is 12345678, the positive card No is opposite to it. The negative card No in the output is 78562312.

(There is no need to set for 2、4、9 series)