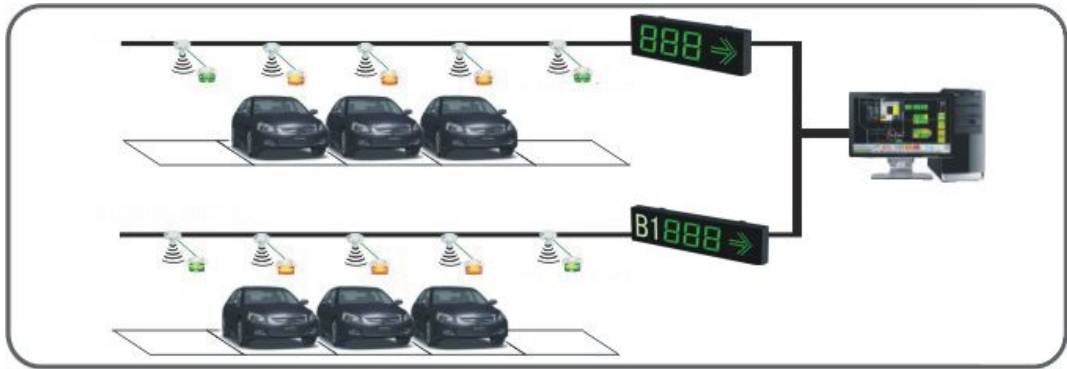


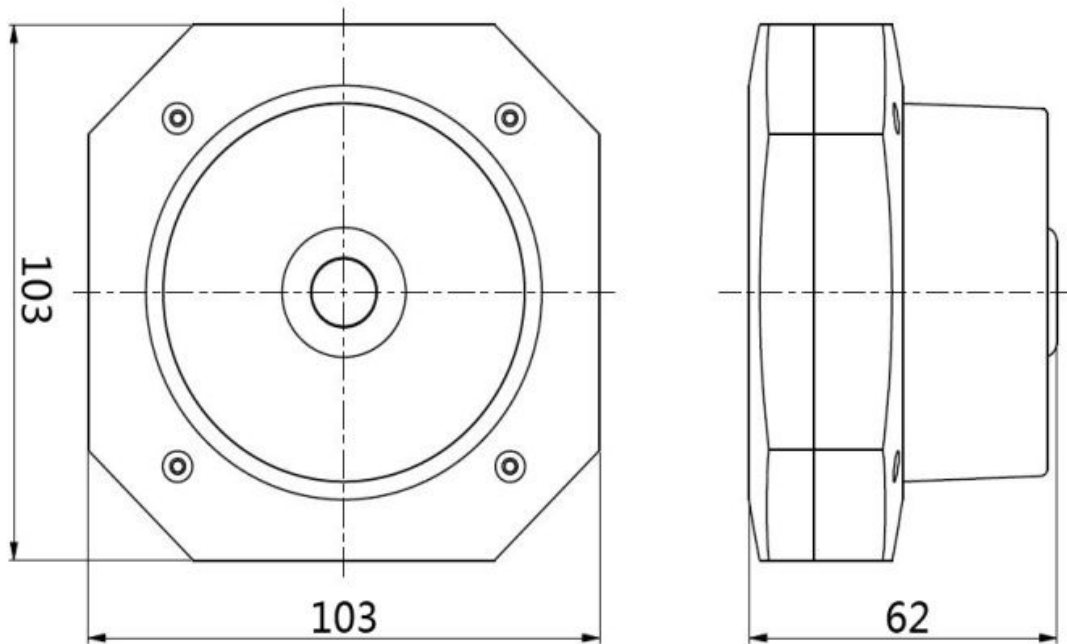
Instructions for Using Parking Lights

1. Summary

Parking lights are an integral part of parking guidance system. The ultrasonic wave can detect whether a parking place is available and then control the changing of the light colors.



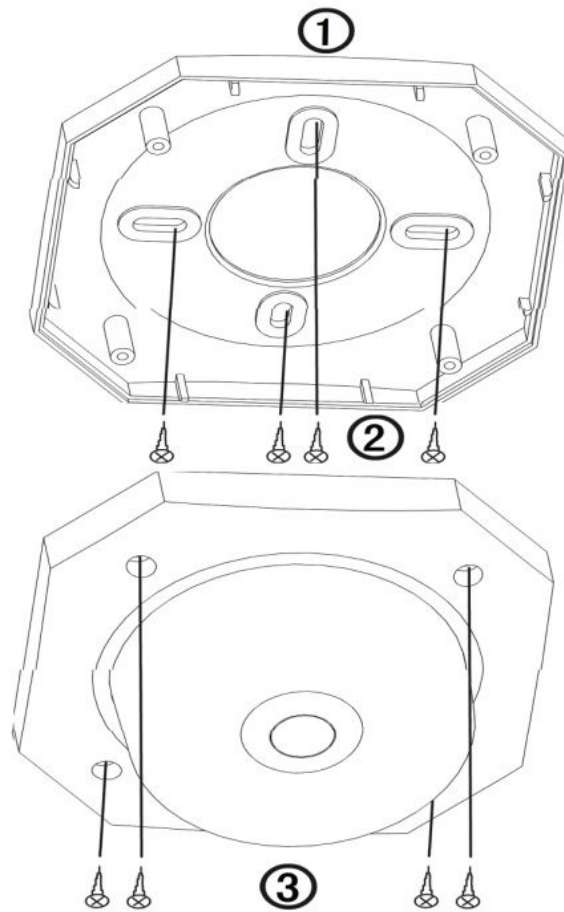
2. Appearance Features Unit (mm)



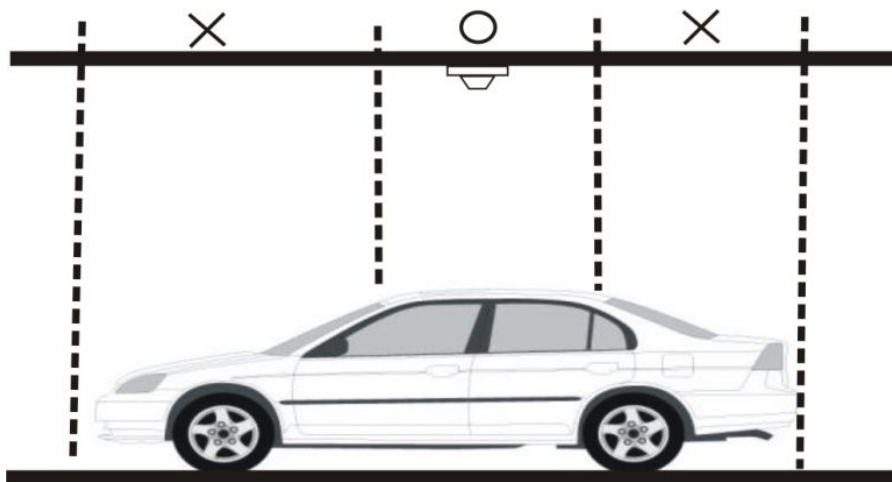
3. Products Parameter

Model	DUD-20L
Input Voltage	DC15~24V
Power Rating	1.5W
Working Temperature	-20~75°C
Size	103*103*62 (mm)
Weight	105 g

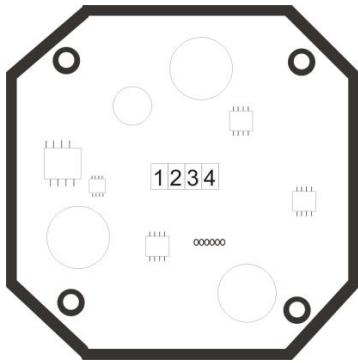
4. Installation Sketch Map



The parking light DUD-20L should be installed in the weak electricity bridge just directly over the roof. The ultrasonic detector can be directly fixed in the weak electricity bridge or be fixed in the Box 86 which is placed in the installation position before installing.



5. Wiring Instruction



1	Vin+
2	Vin-
3	Green-LED-Control
4	Red-LED-Control

Recommend DC24V power cord adopts two-core wire (RVV2*1.0), line of communication(LOC)RS485 the shielded two-core twisted-pair cable(RVV SP2*1.0), control line between the ultrasonic detector DUD-20L and parking lights DUD-20L the shielded two-core twisted-pair cable(RVV SP2*1.0).

6. LED Colors Display the Parking States (Default)

Green light when connect 'Green-LED-Control' is earthing.

Red light when connect 'Red-LED-Control' is earthing.

